

# FORME

APARTMENTS *of* TULLAMORE

## GARDEN TERRACE APARTMENT 111

2 BEDROOMS  
2 BATHROOMS  
STUDY

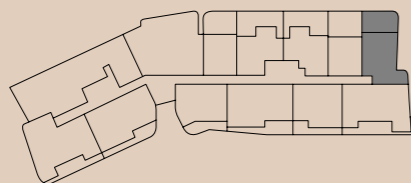
Internal area	89m <sup>2</sup>
Balcony area	43m <sup>2</sup>
Total area	132m <sup>2</sup>

FORME.MIRVAC.COM

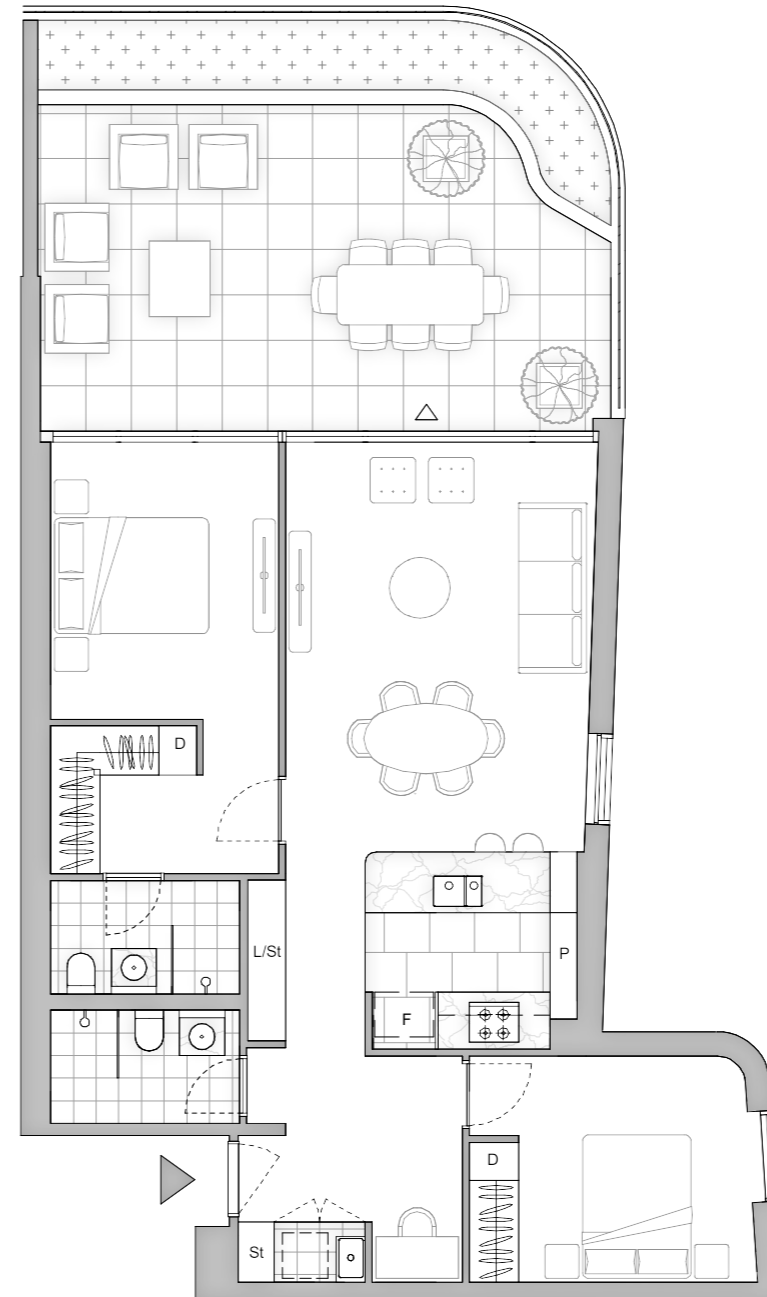
IMPORTANT NOTICE: This floor plan was produced prior to construction and while the information contained herein is believed to be correct it is not guaranteed. Changes will undoubtedly be made in accordance with the contract for sale. The plan does not show additional features such as hot water systems, services or Bulkheads necessary for services. Dimensions, areas and scale of floor plans are approximate only. Areas calculated in accordance with the Property Council of Australia Method of Measurement. The furniture and furnishings depicted are not included with any sale. Purchasers must refer to the contract for sale for the list of inclusions. Furnishings should not be taken to indicate the final position of power points, TV connection points and the like. All graphics, including design and extent of tile/paver/carpet areas, landscaping, balustrades, louvres, sun shading devices, privacy screens, services equipment and wintergardens are for illustrative purposes only and are not to be relied on as a representative of the final product.



DONCASTER RD



STABLES CIRCUIT



- ▲ Access
- △ Balcony Access
- F Fridge
- P Pantry
- K King Bed

- Common Property Planter
- + Garden Terrace Planter
- # Non-trafficable



0 1 2 4M